



PCORE
ELECTRIC

KV CLASS 34.5 kV BIL 200 kV Uy 22 kV

CURRENT RATING

400 AMP DRAW LEAD CONNECTION

DWG. CATALOG NUMBER GLAZE COLOR

SD B-89301-10 BROWN

SD B-89301-10-70 LT. GRAY

DATE 11-30-93 REV. DATE 4-6-20

MAXIMUM ALTITUDE 10000 ft [3000 m]

NET WEIGHT 55 lb [25 kg]

ANGLE OF INCLINATION FROM THE VERTICAL 70° TO 90°

MIN. CREEP 41.00 [1041.4] MIN. STRIKE 17.00 [431.8]

CREEP/L-G 2.06 [52.3] STD. IEEE C57.19.00/01

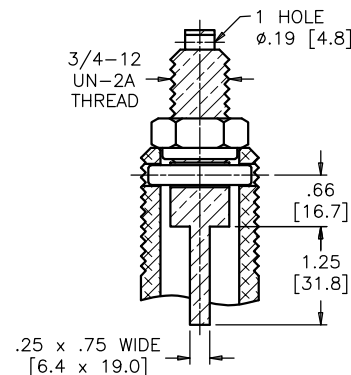
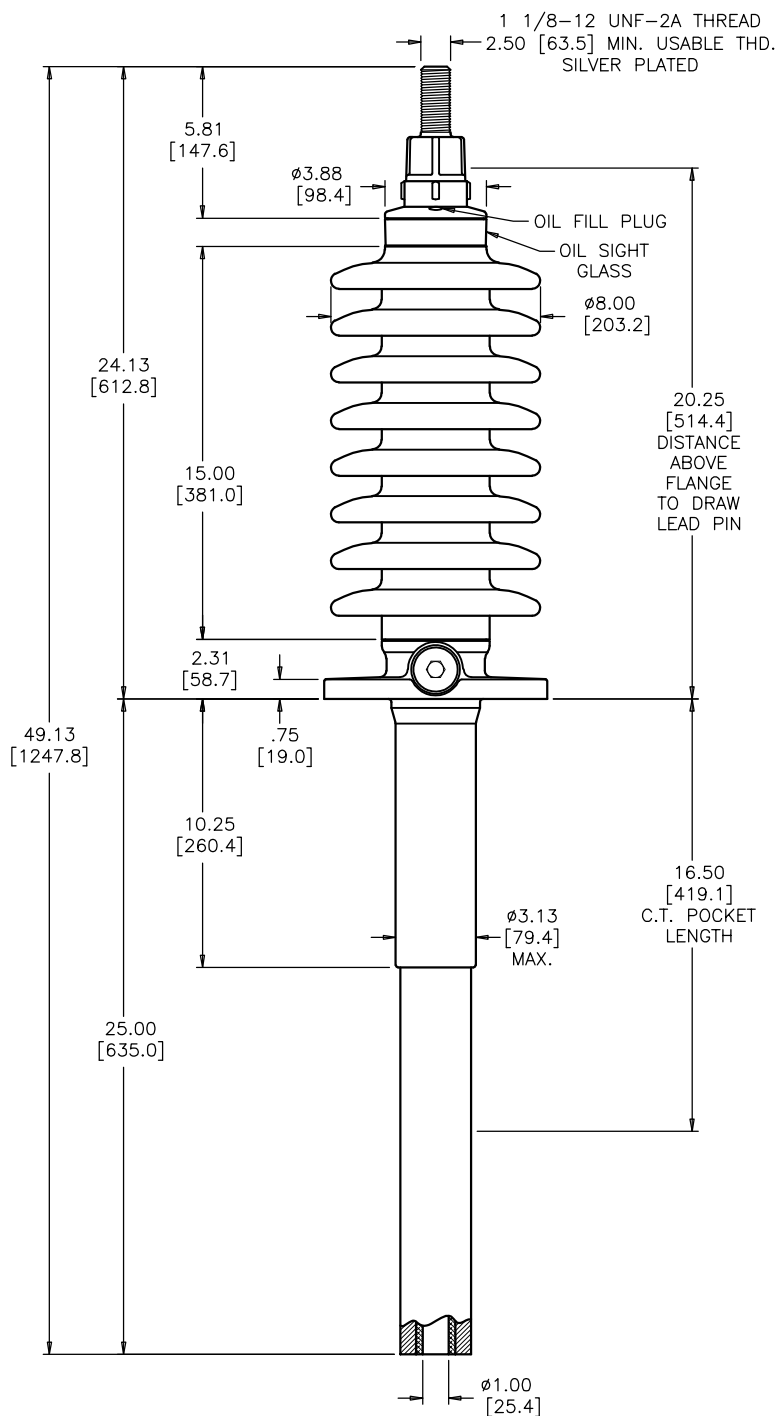
PCB CONTENT OF OIL IS LESS THAN 1 ppm

TITLE

PRC BUSHING

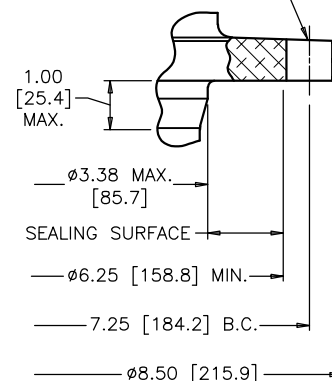
AIR TO OIL
HORIZONTAL MOUNTED WITH TANK

NOTE: ACTUAL DRAW-LEAD CURRENT RATING IS DETERMINED BY CABLE SIZE

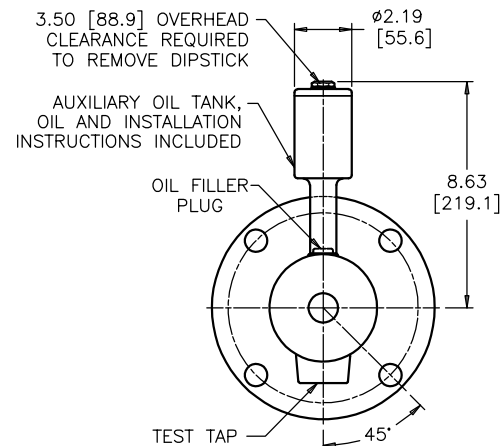


DRAW LEAD ASSEMBLY

4 HOLES Ø.88 [22.2] EQUALLY SPACED



MOUNTING FLANGE DETAIL



**FLANGE ALIGNMENT DIAGRAM
SHOWN HORIZONTALLY MOUNTED
TOP VIEW**

DIMENSIONS IN INCHES [MILLIMETERS]

REVISION NET WEIGHT WAS 51 lbs

SCALE 1/5

NOTE TO PURCHASER:
ALL SALES OF PCORE PRODUCTS ARE SUBJECT
TO OUR STANDARD TERMS AND CONDITIONS
AND THE LIMITED WARRANTIES THEREUNDER